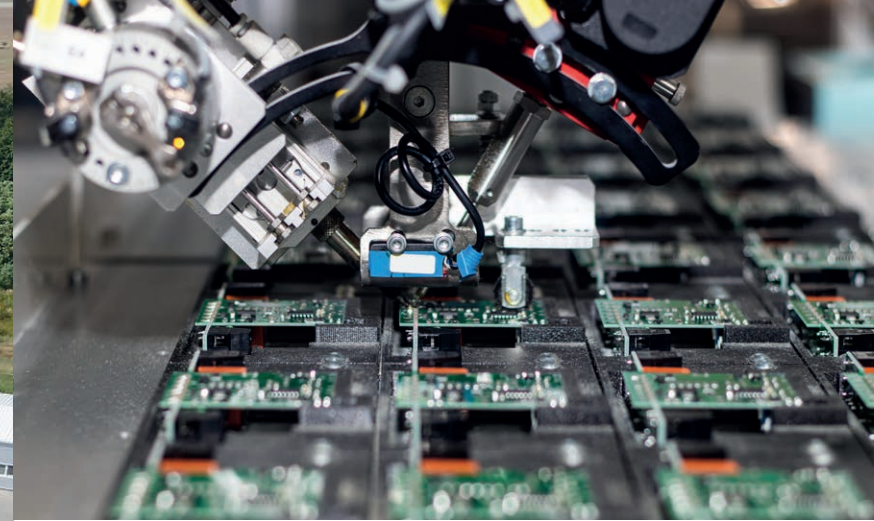


Board & Cases

for a successful life presentation





ELKO EP | Company introduction

ELKO EP have been your partner in the field for 30 years, developing and manufacturing the highest quality electronic devices for electroinstallation as well as Smart System for Residential and Building automation.

- ① Training center
- ② Warehouse
- ③ Testing lab
- ④ Research & Development centre
- ⑤ Administration building
- ⑥ Manufacturing hall

If you want to know more...

ELKO EP employs more than 350 people across 11 foreign branches and exports its products to more than seventy countries.

Company of the Year, Visionary of the Year, Superbrands and Global Exporter of the Year are just some of the awards we have received throughout the years as we consistently strive to move forward in the field of innovation and development.

Millions of relays, thousands of smart homes, hundreds of buildings and many satisfied customers - This is ELKO EP; a traditional company based in the center of Europe, where own development, production, logistics, and service are at the forefront of our focus.



Czech Business Superbrands



Accredited testing laboratory



30 000 +
iNELS installations



30 000 000 +
manufactured products



R&D
continuously innovative



SUPPORT
24 / 7 / 365



MANUFACTURER
fully automated complete proces



5
Years guarancy



Czech
made



Customization
welcome



350
employees in holding



WORLDWIDE
11 branches
6 franchises
70 export countries



1
WIRELESS | SMART ELECTRO
 INSTALLATION

LIGHTS

Universal dimmer 1-channel, Dimmer for LED (RGB) strips, 3-channel, DALI converter controls 32 units, Universal dimmer 6-channels

CONTROLLERS

Glass touch controller, Glass touch controller, On-wall button controller, Controller - key fob

HVAC

Temperature controller, Switch unit 6-channels, Switching unit with external temperature sensor, Wireless thermo valve

2
WIRELESS | SMART ELECTRO
 INSTALLATION

SHADING

On-wall button controller, Switch unit for shutters, On-wall button controller, Input contacts converter

DETECTORS

Motion detector, Outdoor twilight detector, Window/door detector, Flood detector

SWITCHING

Switching unit 1-channel, Switching unit, Switch unit 1-channel, Switch unit 6-channels, Switching socket-plug

OUTDOOR

Switch unit with increased protection, Outdoor controller

iNELS

iNELS

iSS Wireless 1
iSS Wireless 2

Introducing our latest innovation, the double panel wireless with product for home.

A wireless system refers to a network of devices or components that communicate and transfer data through electromagnetic waves, such as radio frequencies or infrared signals, instead of physical connections. Wireless systems can include a variety of applications, such as wireless internet, mobile phones, wireless sensors, and wireless home automation systems. These systems provide convenience, flexibility, and mobility, and are becoming increasingly popular in both personal and professional settings.

On this panel you can see a sample of options for simplifying and making your home or your customers' home more comfortable.

1 BUS SMART WIRED ELECTRO-INSTALLATION

CENTRAL UNITS

miniCU CUS-08M	miniCU CUS-07M	miniCU CUS-09M with integrated DALI BUS separator	Power supply
16 A	16 A	16 A	16 A
16 A	16 A	16 A	16 A
16 A	16 A	16 A	16 A
16 A	16 A	16 A	16 A

CONTROLLERS CLASSIC

DIMMING

2 BUS SMART WIRED ELECTRO-INSTALLATION

INTEGRATION

CONTROLLERS GLASS

HVAC CONTROL

ISS BUS 1 ISS BUS 2

The double panel wired product is a versatile and efficient solution for view options controlling different types of electrical devices.

A wired system is a technology infrastructure that uses physical cables to connect devices and transmit information. It is commonly used in networking, security, and audio systems. This system is also less prone to interference from other electromagnetic sources and can transmit larger amounts of data over long distances.

Wired systems offer greater reliability and security compared to wireless systems, but they require more installation time and can be more expensive.

SWITCHING

Room Controller

I/O UNITS

LARA AUDIO 5in1

MUSIC IN YOUR SWITCH

1 RELÉ

SOUKRAKOVÉ SPÍNAČE

STMÍVAČE

NAPÁJECÍ ZDROJE

USS

MONITOROVACÍ RELÉ

PROUD

HLADINA

TEPLOTA

2 RELÉ

ČASOVÁ RELÉ

SPÍNACÍ HODINY

PAMĚTOVÁ A BISTABILNÍ RELÉ

POMOCNÁ RELÉ A STYKAČE

RELAYS 1 RELAYS 2

Relays panel show devices used in control panels to switch electrical circuits on and off.

They are for applications that require high levels of reliability, safety, and accuracy. Relays can be used in a wide range of industries such as HVAC, energy management, and industrial automation. They can be used to control, lights, fans, heaters, and other electrical equipment. Relays are an essential component in control systems that require precise and reliable switching.

This panel serves to demonstrate the possibilities of how to simplify living.

1 RELAYS

UL LISTED CUL US CUL US IEC-MEA

TWILIGHT SWITCHES

- ANALOG - DIGITAL

- adjustable time delay
- integrated time switch

DIMMERS

- when turned off the set brightness is saved into the memory
- when turned off the set brightness is saved into the memory

POWER SUPPLIES

- SWITCHING - ANALOG

- LED output indication
- LED output indication
- LED output indication
- more output voltages: 48 V for primary protection, output current

2 RELAYS

UL LISTED CUL US CUL US IEC-MEA

TIME RELAYS

- MULTIFUNCTION

- higher isolation resistance thanks to screwless terminals
- operation mode for 2nd & 3rd contact
- possibility of galvanically isolated circuit
- each function needs to be supported by 0.5A/10V input
- setting can be put on PWD or control

TIME RELAYS

- SPECIAL

- adjustable independent switch On and Off times
- holds contact for the set time even during power failure

TIME SWITCHES

- DIGITAL

- LED output indication
- LED output indication
- more output voltages: 48 V for primary protection, output current

ANOTHER AVAILABLE TYPES

- STAR-DELTA TIMER
- SINGLE FUNCTION RELAYS
- ENERGY-SAVING TIME RELAY
- EMERGENCY LIGHT TESTER

RELAYS ISE 1 RELAYS ISE 2

The double panel wired product is a versatile and efficient solution for view options controlling different types of electrical devices.

A wired system is a technology infrastructure that uses physical cables to connect devices and transmit information. It is commonly used in networking, security, and audio systems. This system is also less prone to interference from other electromagnetic sources and can transmit larger amounts of data over long distances.

Wired systems offer greater reliability and security compared to wireless systems, but they require more installation time and can be more expensive.

TIME SWITCHES

- ANALOG

- minimum switching interval: 10 minutes
- operation mode selector: ON, OFF, AC/DC
- more types available

STAIRCASE SWITCHES

- controlling staircase lighting
- controlling the lighting by the number of button presses
- available in basic and advanced version

MEMORY & BISTABLE RELAYS

- ELECTRONIC - ELECTROMECHANICAL

- version with trigger or bistable
- more contact configurations and terminals
- remote control of terminal bus

AUXILIARY RELAYS & CONTACTORS

- selectable color of indication LED (one green, blue, white)
- selectable color of indication LED (one green, blue, white)
- more types with different housing, mounting, contact configuration
- available voltages: AC/DC 24V, 48V, 120V, 230V
- more types with different housing, mounting, contact configuration
- available voltages: AC/DC 24V, 48V, 120V, 230V

CONTROLLING & SIGNALING MODULES

- wide selection of modules
- switching positions, signal lights
- available in 16 modules in the range
- equipped inputs for each module

CURRENT RELAYS

LIQUID RELAYS

- ideal solution for monitoring V2 input wires
- adjustable time delay
- more types with 2nd, 3rd, 4th contact, with 2 contacts and 2 outputs

VOLTAGE RELAYS

- ANALOG - DIGITAL

- supply from monitored voltage
- adjustable measurement
- possibility of 4th function
- read voltage input
- more types: AC/DC 24-110V AC/DC 48-230V, 0-5-230V
- supply from monitored voltage
- over and under-voltage monitoring
- more configurations available
- supply from monitored voltage
- possibility of 4th function
- read time values on display

TEMPERATURE RELAYS

- ANALOG - DIGITAL

- more types with different functions and targets
- optional reset on panel
- available supply voltages: AC/DC 24V, AC 230V

1 INSPINIA

Inspiration for your living space.

TOUCH PANELS

- Android 6.0
- 5 Point Touch
- POE Gigabit Ethernet
- 2x 2W Speakers
- Microphone
- 2x Digital Input
- 2x Digital Output
- Temperature Sensor
- Humidity Sensor
- 2x Extension Add-On Ports
- 2.4 GHz Antenna
- 4 IPS CTP
- POE Ethernet
- Temperature Sensor
- Humidity Sensor
- 1x Extension Add-On Ports
- 1 Digital Input
- 1 Digital Output

METAL FRAME OPTIONS

ADD-ONS

- KNX: 2-pin, 3-pin, 4-pin, 5-pin, 6-pin, 7-pin, 8-pin, 9-pin, 10-pin, 11-pin, 12-pin, 13-pin, 14-pin, 15-pin, 16-pin, 17-pin, 18-pin, 19-pin, 20-pin, 21-pin, 22-pin, 23-pin, 24-pin, 25-pin, 26-pin, 27-pin, 28-pin, 29-pin, 30-pin, 31-pin, 32-pin, 33-pin, 34-pin, 35-pin, 36-pin, 37-pin, 38-pin, 39-pin, 40-pin, 41-pin, 42-pin, 43-pin, 44-pin, 45-pin, 46-pin, 47-pin, 48-pin, 49-pin, 50-pin, 51-pin, 52-pin, 53-pin, 54-pin, 55-pin, 56-pin, 57-pin, 58-pin, 59-pin, 60-pin, 61-pin, 62-pin, 63-pin, 64-pin, 65-pin, 66-pin, 67-pin, 68-pin, 69-pin, 70-pin, 71-pin, 72-pin, 73-pin, 74-pin, 75-pin, 76-pin, 77-pin, 78-pin, 79-pin, 80-pin, 81-pin, 82-pin, 83-pin, 84-pin, 85-pin, 86-pin, 87-pin, 88-pin, 89-pin, 90-pin, 91-pin, 92-pin, 93-pin, 94-pin, 95-pin, 96-pin, 97-pin, 98-pin, 99-pin, 100-pin
- ZigBee: 2-pin, 3-pin, 4-pin, 5-pin, 6-pin, 7-pin, 8-pin, 9-pin, 10-pin, 11-pin, 12-pin, 13-pin, 14-pin, 15-pin, 16-pin, 17-pin, 18-pin, 19-pin, 20-pin, 21-pin, 22-pin, 23-pin, 24-pin, 25-pin, 26-pin, 27-pin, 28-pin, 29-pin, 30-pin, 31-pin, 32-pin, 33-pin, 34-pin, 35-pin, 36-pin, 37-pin, 38-pin, 39-pin, 40-pin, 41-pin, 42-pin, 43-pin, 44-pin, 45-pin, 46-pin, 47-pin, 48-pin, 49-pin, 50-pin, 51-pin, 52-pin, 53-pin, 54-pin, 55-pin, 56-pin, 57-pin, 58-pin, 59-pin, 60-pin, 61-pin, 62-pin, 63-pin, 64-pin, 65-pin, 66-pin, 67-pin, 68-pin, 69-pin, 70-pin, 71-pin, 72-pin, 73-pin, 74-pin, 75-pin, 76-pin, 77-pin, 78-pin, 79-pin, 80-pin, 81-pin, 82-pin, 83-pin, 84-pin, 85-pin, 86-pin, 87-pin, 88-pin, 89-pin, 90-pin, 91-pin, 92-pin, 93-pin, 94-pin, 95-pin, 96-pin, 97-pin, 98-pin, 99-pin, 100-pin
- Bluetooth: 2-pin, 3-pin, 4-pin, 5-pin, 6-pin, 7-pin, 8-pin, 9-pin, 10-pin, 11-pin, 12-pin, 13-pin, 14-pin, 15-pin, 16-pin, 17-pin, 18-pin, 19-pin, 20-pin, 21-pin, 22-pin, 23-pin, 24-pin, 25-pin, 26-pin, 27-pin, 28-pin, 29-pin, 30-pin, 31-pin, 32-pin, 33-pin, 34-pin, 35-pin, 36-pin, 37-pin, 38-pin, 39-pin, 40-pin, 41-pin, 42-pin, 43-pin, 44-pin, 45-pin, 46-pin, 47-pin, 48-pin, 49-pin, 50-pin, 51-pin, 52-pin, 53-pin, 54-pin, 55-pin, 56-pin, 57-pin, 58-pin, 59-pin, 60-pin, 61-pin, 62-pin, 63-pin, 64-pin, 65-pin, 66-pin, 67-pin, 68-pin, 69-pin, 70-pin, 71-pin, 72-pin, 73-pin, 74-pin, 75-pin, 76-pin, 77-pin, 78-pin, 79-pin, 80-pin, 81-pin, 82-pin, 83-pin, 84-pin, 85-pin, 86-pin, 87-pin, 88-pin, 89-pin, 90-pin, 91-pin, 92-pin, 93-pin, 94-pin, 95-pin, 96-pin, 97-pin, 98-pin, 99-pin, 100-pin
- gTicino: 2-pin, 3-pin, 4-pin, 5-pin, 6-pin, 7-pin, 8-pin, 9-pin, 10-pin, 11-pin, 12-pin, 13-pin, 14-pin, 15-pin, 16-pin, 17-pin, 18-pin, 19-pin, 20-pin, 21-pin, 22-pin, 23-pin, 24-pin, 25-pin, 26-pin, 27-pin, 28-pin, 29-pin, 30-pin, 31-pin, 32-pin, 33-pin, 34-pin, 35-pin, 36-pin, 37-pin, 38-pin, 39-pin, 40-pin, 41-pin, 42-pin, 43-pin, 44-pin, 45-pin, 46-pin, 47-pin, 48-pin, 49-pin, 50-pin, 51-pin, 52-pin, 53-pin, 54-pin, 55-pin, 56-pin, 57-pin, 58-pin, 59-pin, 60-pin, 61-pin, 62-pin, 63-pin, 64-pin, 65-pin, 66-pin, 67-pin, 68-pin, 69-pin, 70-pin, 71-pin, 72-pin, 73-pin, 74-pin, 75-pin, 76-pin, 77-pin, 78-pin, 79-pin, 80-pin, 81-pin, 82-pin, 83-pin, 84-pin, 85-pin, 86-pin, 87-pin, 88-pin, 89-pin, 90-pin, 91-pin, 92-pin, 93-pin, 94-pin, 95-pin, 96-pin, 97-pin, 98-pin, 99-pin, 100-pin
- VRV & VRF SYSTEMS: 2-pin, 3-pin, 4-pin, 5-pin, 6-pin, 7-pin, 8-pin, 9-pin, 10-pin, 11-pin, 12-pin, 13-pin, 14-pin, 15-pin, 16-pin, 17-pin, 18-pin, 19-pin, 20-pin, 21-pin, 22-pin, 23-pin, 24-pin, 25-pin, 26-pin, 27-pin, 28-pin, 29-pin, 30-pin, 31-pin, 32-pin, 33-pin, 34-pin, 35-pin, 36-pin, 37-pin, 38-pin, 39-pin, 40-pin, 41-pin, 42-pin, 43-pin, 44-pin, 45-pin, 46-pin, 47-pin, 48-pin, 49-pin, 50-pin, 51-pin, 52-pin, 53-pin, 54-pin, 55-pin, 56-pin, 57-pin, 58-pin, 59-pin, 60-pin, 61-pin, 62-pin, 63-pin, 64-pin, 65-pin, 66-pin, 67-pin, 68-pin, 69-pin, 70-pin, 71-pin, 72-pin, 73-pin, 74-pin, 75-pin, 76-pin, 77-pin, 78-pin, 79-pin, 80-pin, 81-pin, 82-pin, 83-pin, 84-pin, 85-pin, 86-pin, 87-pin, 88-pin, 89-pin, 90-pin, 91-pin, 92-pin, 93-pin, 94-pin, 95-pin, 96-pin, 97-pin, 98-pin, 99-pin, 100-pin

SAMSUNG, MITSUBISHI ELECTRIC, TOSHIBA, LG, CHIGO, DAIKIN, MITSUBISHI, HITACHI, Aidea, Panasonic

www.inspinia.eu

2 INSPINIA

Inspiration for your living space.

AIRCON INTERFACE

COMPATIBLE WITH

INSQ, INRT, INBQ, INVSQ, MN-SRV

SERVERS

IP, RS-485, Modbus, ZigBee, KNX

INTEGRATION

MULTI PROTOCOL, MONITORING, LOGIC, CONTROL, SCHEDULE, REPORTS, ONLINE CONFIGURATION, ONLINE UPDATE

www.inspinia.eu

INSPINIA 1 INSPINIA 2

The Inspinia Touch Panels are designed to bring advanced smart home and building automation to your fingertips. These panels combine high-end technology with sophisticated design, making them ideal for modern living spaces. Available in various finishes such as black, silver, and gold, the Inspinia panels are crafted to complement any interior decor.

Standard interfaces include LAN RJ45, digital inputs and outputs, and optional interfaces for KNX, Zigbee, and Modbus, ensuring compatibility with a wide range of smart home devices. The Inspinia Touch Panels offer a seamless blend of style and functionality, making them a valuable addition to any smart home or building automation system.



LATINA & LOGUS⁹⁰
QUADRA & POLO

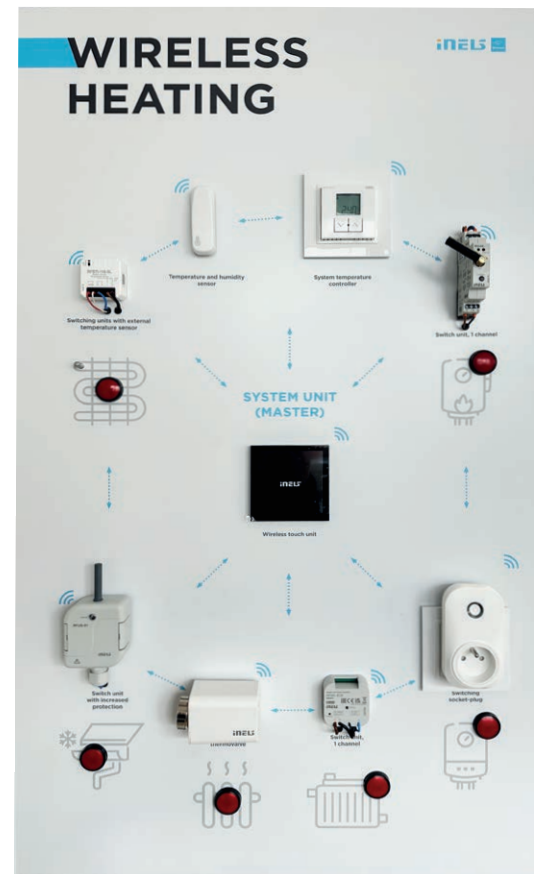
Logus button controllers are compact and user-friendly devices used for various operations in industrial, commercial and homes environments.

These controllers allow the operator to control machinery or lighting, activate alarms, or trigger other systems with the push of a button or by a simple touch. They are made of robust materials and can withstand harsh environmental conditions. Logus button controllers are designed for easy installation and can be customized to fit the specific needs of different applications.

With its versatile and powerful functionality, the Logus controllers are an essential component for modern building management.

1

2



WIRELESS HEATING

The Wireless Heating Panel showcases the innovative heating solutions offered by iNELS Wireless.

This display panel features a range of products designed for efficient and smart heating control, demonstrating their capabilities and versatility in managing various heating systems. From wireless thermostats to control units, each product exemplifies the ease of integration and user-friendly operation that defines the iNELS Wireless range.

The panel serves as an excellent visual guide for exploring the possibilities of wireless heating technology, helping users and integrators understand how these products can enhance energy efficiency and comfort in both residential and commercial applications.



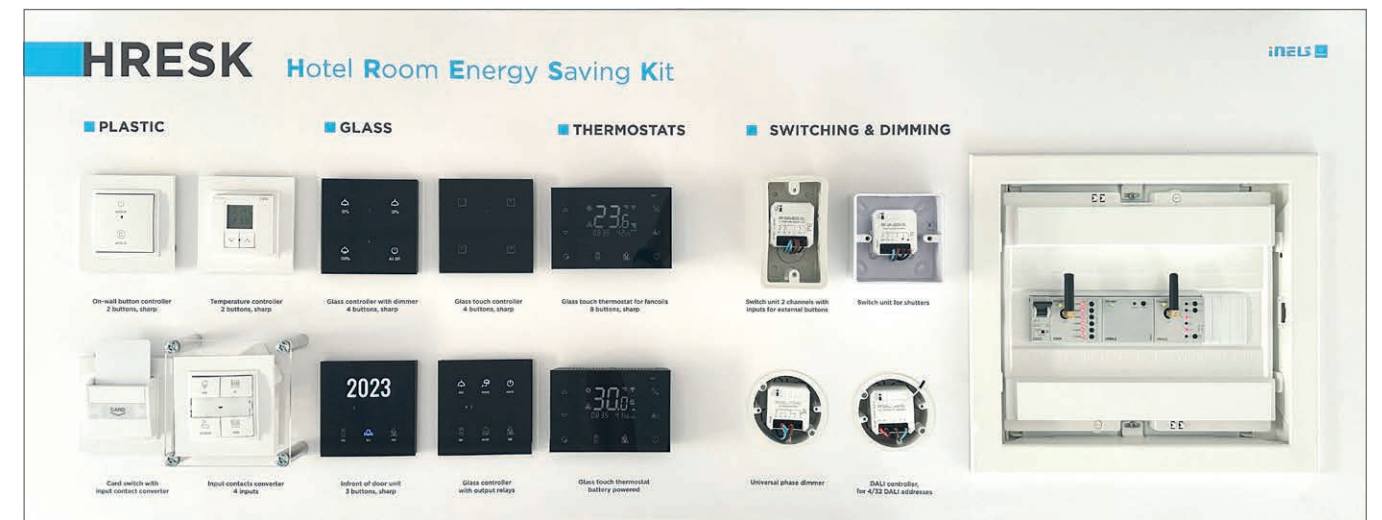


- signalling board
 - control board
 - cabinet
- set

iNELS GRMS ISE 2024

Discover the elegance of control with iNELS GRMS, the ultimate solution for guest room management. Our system offers intuitive touch panels that blend seamlessly into any room design, providing guests with effortless control over lighting, climate, and entertainment.

The iNELS GRMS products are not just about functionality; they are about creating an experience that resonates with the modern traveler's desire for comfort, control, and luxury.



- signalling board
 - control board
 - cabinet
- set

INELS HRESK ISE 2024

HRESK offers a suite of devices that control lighting, temperature, and courtesy functions, all communicating wirelessly using a radio-protocol tailored for building automation. This innovative approach allows for a swift and clean installation process, elevating the hotel's electrical infrastructure to a new level of sophistication.

The HRESK system is not just a technological upgrade; it's a commitment to enhancing the guest experience through intuitive control, design elegance, and operational efficiency.



iNELS Wireless ISE 2024

iNELS, a leader in smart home and building automation, presents a suite of wireless products designed to revolutionize hotel room management. These solutions offer a seamless blend of functionality, design, and innovation, ensuring a superior guest experience and operational efficiency.

iNELS wireless products can be installed without any demolition or structural changes, making them ideal for both new constructions and existing buildings.



iNELS BUS ISE 2024

The iNELS BUS system is a sophisticated network infrastructure that forms the foundation of smart building automation. It connects all devices within a building, from sensors and actuators to controllers and central units, through a robust wired bus network. This system is ideal for larger residential units, commercial buildings, and any application where comprehensive

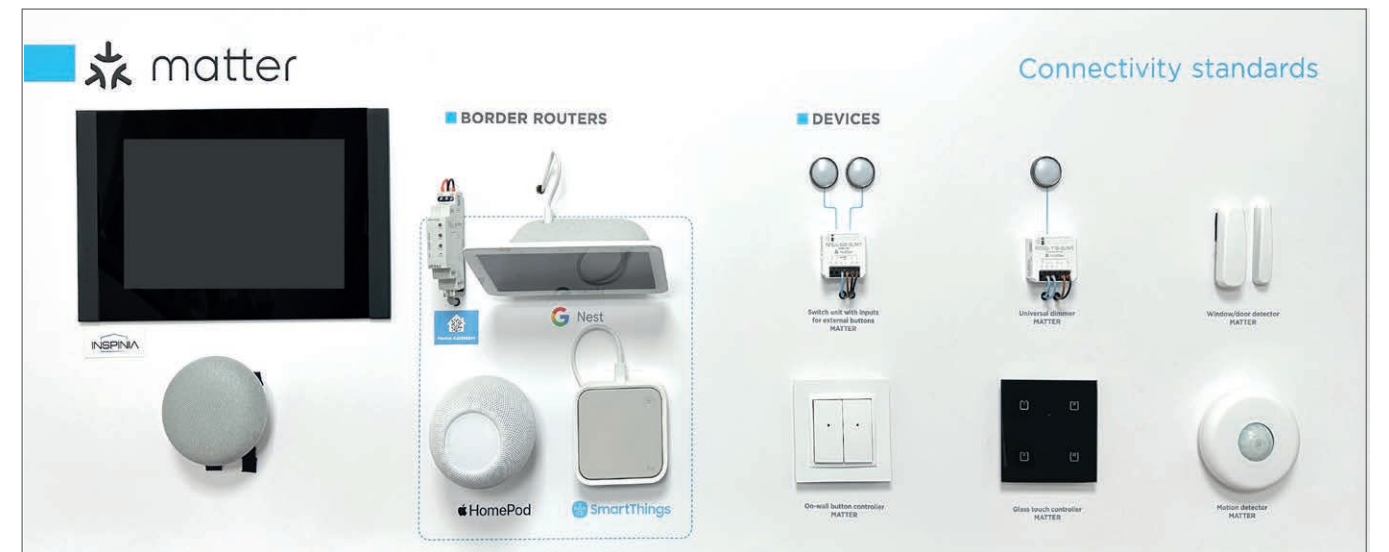
automation is essential. The iNELS BUS system is not just a product; it's a commitment to optimized building management, occupant comfort, and safety. It provides actionable insights for efficient operation, making it an indispensable part of today's smart buildings.



iNELS Integration ISE 2024

The iNELS Integration Board facilitates the integration of iNELS smart home and building solutions with third-party systems. It's designed to bridge the gap between iNELS devices and other platforms, such as Home Assistant, enabling a seamless and cohesive smart environment. By implementing the iNELS Integration Board, users can enjoy the benefits of a

comprehensive smart home system that is both flexible and user-friendly, making it an ideal choice for those looking to enhance their smart home or building automation.



iNELS Matter ISE 2024

Matter is a universal standard designed to unify the control of various smart devices, ensuring seamless communication across different brands and ecosystems.

ELKO EP's Matter-enabled products include a range of controllers, switches, dimmers, and sensors. For example, their RFMD-200/MT motion detector is designed for ceiling in-

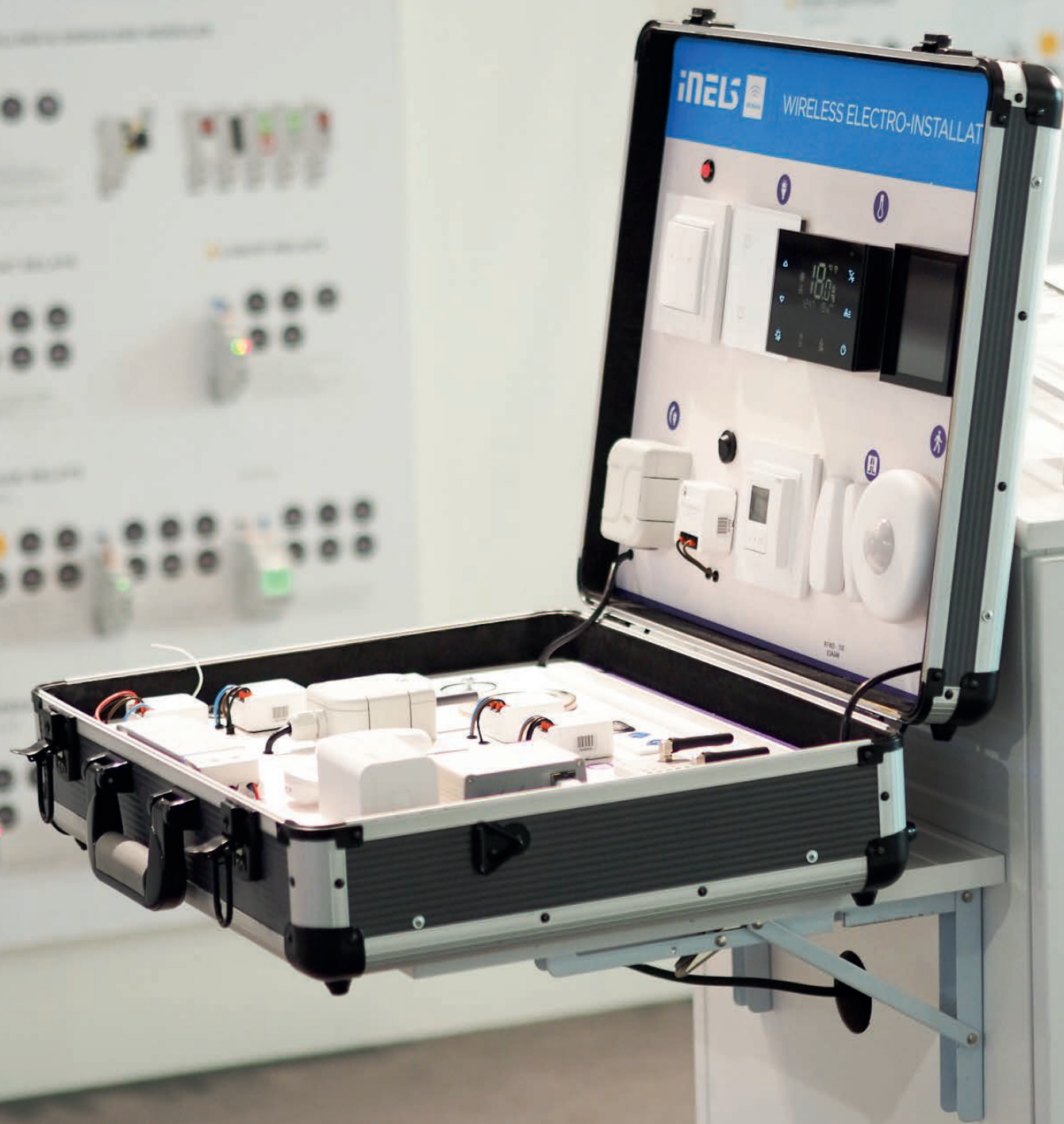
stallation and can detect movement to control lighting and other devices. Another product, the RFGB-40/MT glass touch controller, offers an elegant interface for managing multiple smart home functions.



iNELS wireless & matter 2024

The plexiglass panel showcases the seamless integration of iNELS Wireless and Matter products. This setup demonstrates advanced home automation where devices communicate efficiently. The iNELS Wireless system, known for its flexible

and easy installation, connects various sensors, controllers, and performance units wirelessly. This combination on the plexiglass panel highlights the future of smart home technology, offering both reliability and versatility.



iNELS BUS STARTER KIT 2024

The iNELS BUS STARTER KIT is a meticulously crafted package that serves as the perfect introduction to the iNELS BUS system, a sophisticated wired solution for smart home and building automation. This starter kit is specifically designed

for those embarking on new construction projects or large-scale renovations, providing a solid foundation in the realm of intelligent electroinstallation.



iNELS WIRELESS STARTER KIT 2024

Is designed to provide a simple and efficient entry point into smart home automation. This kit includes essential components to help you start automating and controlling various aspects of

your home environment without the need for extensive wiring or complex installations.



iNELS WIRELESS 2023

The instructional suitcase for electro technic is a comprehensive educational tool designed for students and professionals in the field of electrical engineering. Suitcase contains wireless touch controllers, sensors, detectors, thermostats, actors, switches and many others.

With this suitcase, students and professionals can gain a deeper understanding of electrical engineering, and improve their skills in designing, troubleshooting, and repairing electrical systems.



iNELS BUS 2023

The wired electro technic instructional case is designed to provide hands-on training for students and professionals in the field of electrical engineering. Suitcase contains wired room control using switches, controllers and actors. Users can experiment with different wiring and component placements, allowing them to learn about electrical theory and practical applications.

The case is durable and compact, making it suitable for both individual use and classroom instruction. Overall, the wired electro technic instructional case is an excellent tool for anyone looking to learn more about electrical engineering.



iNELS Shutter Control 2024

The wired shading control presentation case is an innovative tool designed to demonstrate and train users on smart shading solutions by iNELS. This compact case showcases components for controlling blinds, shutters, and awnings, including switches, controllers, and actuators. The case provides a hands-on experience, making it ideal for training sessions, product demon-

strations, or technical presentations. With its durable design and portability, the iNELS Shading Control Case is perfect for professionals, integrators, and educators seeking to understand and present advanced shading technologies.



INELS LOGUS⁹⁰

We offers a range of stylish and functional switches, sockets, and controllers designed to enhance both residential and commercial spaces. The LOGUS90 line is known for its high-quality

materials and elegant design, making it a popular choice for modern interiors.



● **Headquarters**

ELKO EP Holding SE, Czech Republic

● **Europe**

ELKO EP Balkan d.o.o
ELKO EP Bulgaria OOD
ELKO EP Germany GmbH
ELKO EP Hungary Kft.
ELKO EP POLAND Sp. z o.o.
ELKO EP SLOVAKIA, s.r.o.
ELKO EP UK Ltd.
ELKO EP UKRAINE LLC

● **Africa & Middle East**

ELKO EP Egypt LLC
ELKO EP Kuwait Ltd.
ELKO EP MEA LLC
ELKO EP Saudi Arabia Ltd.
ELKO EP South Africa PTY Ltd.

● **America**

ELKO EP North America LLC



ELKO EP, s.r.o. | Palackeho 493 | 769 01 Holesov, Vsetuly | Czech Republic

phone: +420 573 514 221 | fax: +420 573 514 227 | elko@elkoep.com | www.elkoep.com

Published: 2025 | Modifications or amendments reserved | © Copyright ELKO EP, s.r.o. | 1st edition