

Show the Smart Home

in your iNELS Smart Shop



Smart Home

is a phenomenon, everybody talks about and everyone wants it. It is moving from the “nice to have” level into “the must have” one. The same as the world of smart phones or autonomous cars. Its speed of growth has been accelerated by technology giants worldwide and also by professionals. It is the story of iNELS.

It is the story about available solutions for all of you. Do not be afraid of technology. It is easy. Do not worry about the costs. It is achievable and you can start with a small setup and continuously grow it, as you need. iNELS is a partner for your home, for architects, for designers, for system integrators and for individual electricians. iNELS is a guide to Smart Home.



iNELS Smart Shop (iSS)

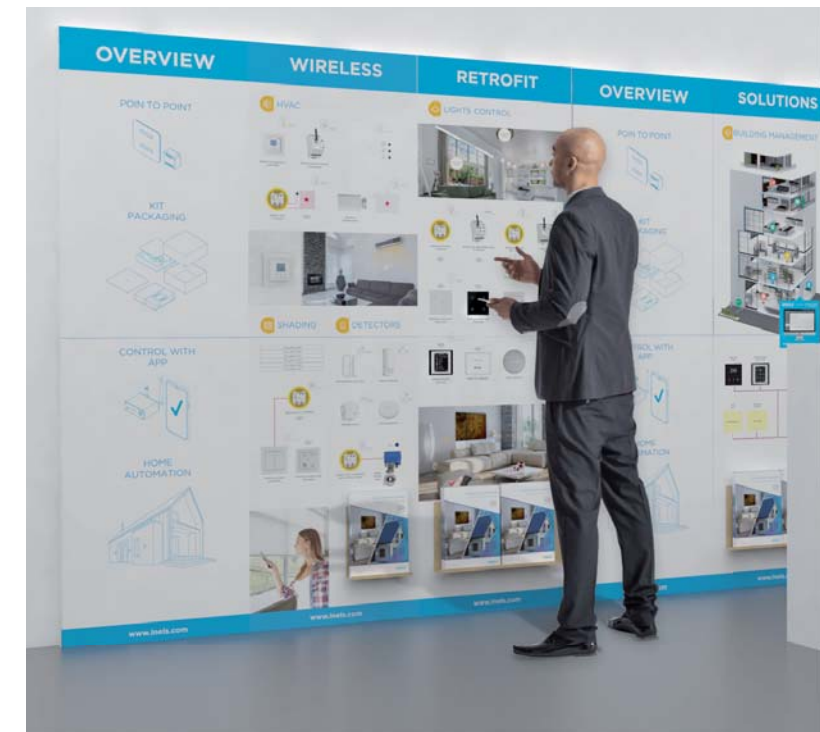
It is a space where you can touch the technology, to use its functions and feel the results. How easy it is to control smart lighting, how to get a comfortable room temperature at any time, how to save on consumption, how to be secure ... how to automatise the home.

The concept of the iNELS Smart Shop, it points to present and demonstrates all the Smart Home products and solution in a live environment. All the components, which are available and the achievable results.



Based on panels with typical use-cases for:

The concept of the iNELS Smart Shop, it points to present and demonstrates all the Smart Home products and solution in a live environment. All the components, which are available and the achievable results. Based on panels with typical use-cases for lighting control with dimming function and lighting scenes including RGB strips, shielding control and its automatization, heating & cooling management, security section with a wide range of detectors and cameras, access control functions, energy consumption monitoring, and even a multimedia section.



iSS for different target groups

End users



An End user is typically a person(s), who looks for interior equipment, in case of electro-installation especially for lights. The second step is functions – switch on/off, dimming, colours in case of RGB light, light scenes. This is the point of iNELS and with available live demos with a natural shift to wall switches offer of different frame designs and materials. Then the customer can see the other possibilities of Smart Home and its complexity. An objective of the iNELS Smart shop is to make a deal.

- Direct sales typically of an iNELS Kit with a wall controller and active unit (e.g. dimming switch) to cover customer’s current need AND/OR
- Request for consultation with iNELS professionals in case of large projects with options to realize a meeting at the shop premises or at the building concerned.

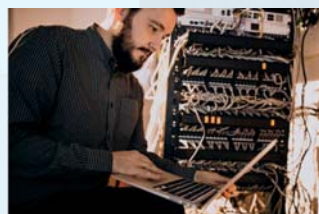
Architects and designers



They can represent the end user or building developers to choose the right equipment and standards. They do not make a direct deal, but they do make recommendations. So, they have to get a positive feeling and relevant information.

- A presentation of products design and materials used
- List of functions and their practical use including live demonstrations
- Technical datasheets, brochures, data files (e.g. DWG format) for computing design, certificates.

System integrators or individual electricians



A target group that is responsible for realization. They can follow the requirements of previous target groups, but they can also play a role in making recommendations especially to end users. They have to understand all the technical aspects and to get detailed technical information.

- All product units are in one place with the possibility to try out the features
- Become familiar with the SW solution and to obtain its latest version (e.g. firmware)
- Technical catalogues available
- Possibility to get a professional training
- To realize an order

From a unit to a full automatized house

It can be natural growth from one smart unit, through a particular solution, to comprehensive installation for a fully automatized home.



iSS contains



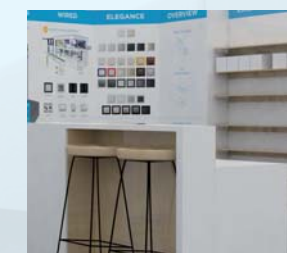
Components

Using the shelf panel or show-case to present individual components and their wide range. They are professional products and each individual unit is compatible with all other iNELS products. It allows a continuous growth of every home installation following current needs.



Kits

Mainly, it is a set of one controller (e.g. wall controller) with an active unit (e.g. switch), which is ready for immediate installation. Although the kits are design as “preprogramed plug-&-play” and their installation can be done by a buyer-themselves, it is still a professional product, which should not be compared to a “hobby” production.



Presentation panels

The panels should present a wide range of available product design especially. They only act as displays, presented products are not functional. The point is to see all the units and their functions in a broader context.



Demonstration panels

Fully functional panels that presents a technology or typical use-cases. Everyone can test the installed system, try to control all the included elements and “play” with it..

The shop disposition

iNELS Smart Shop is design as a multifunctional space. It is a presentation and demonstration room, it is a training and knowledge centre, and it is also a point-of-sale.



Point of interest

Demonstration panels, presentations and videos on LED TV, brochures, & leaflets.

Workshop centre

Realization of orders / claims, testing HUB, technical information library (catalogues, datasheets).

Point of sale

Available goods displayed on shelf panels, sales counter.

Panel based modular system

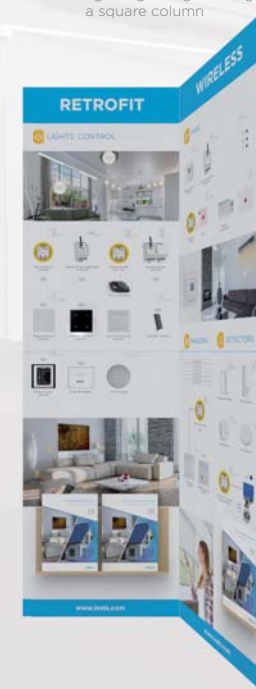
Make your own original spaceroom

Base modul **600x2000 mm**



iNELS disposition of the panel modular system uses the standardized size matrix of 600 x 2000 mm (width x height). Each panel can represent a product range (iNELS RF, iNELS BUS, relays, wall switches, lights) or typical use-case. The system of panels also offers design shelves and cabinets to exhibit products and its packaging. The panel can be combined as needed for any purpose and any space according to actual requirements. The standard setup also includes a sales counter for individual presentations and sales itself. It is easy to assemble according to requirements of any space and its purpose, it is possible to combine presentation, demonstration and sales panels as needed.

Mounting at right angles using a square column



Mounting at any angle using an articulated column



Make your own original spaceroom

in your iNELS Smart Shop



www.elkoep.com

Modifications or amendments reserved.